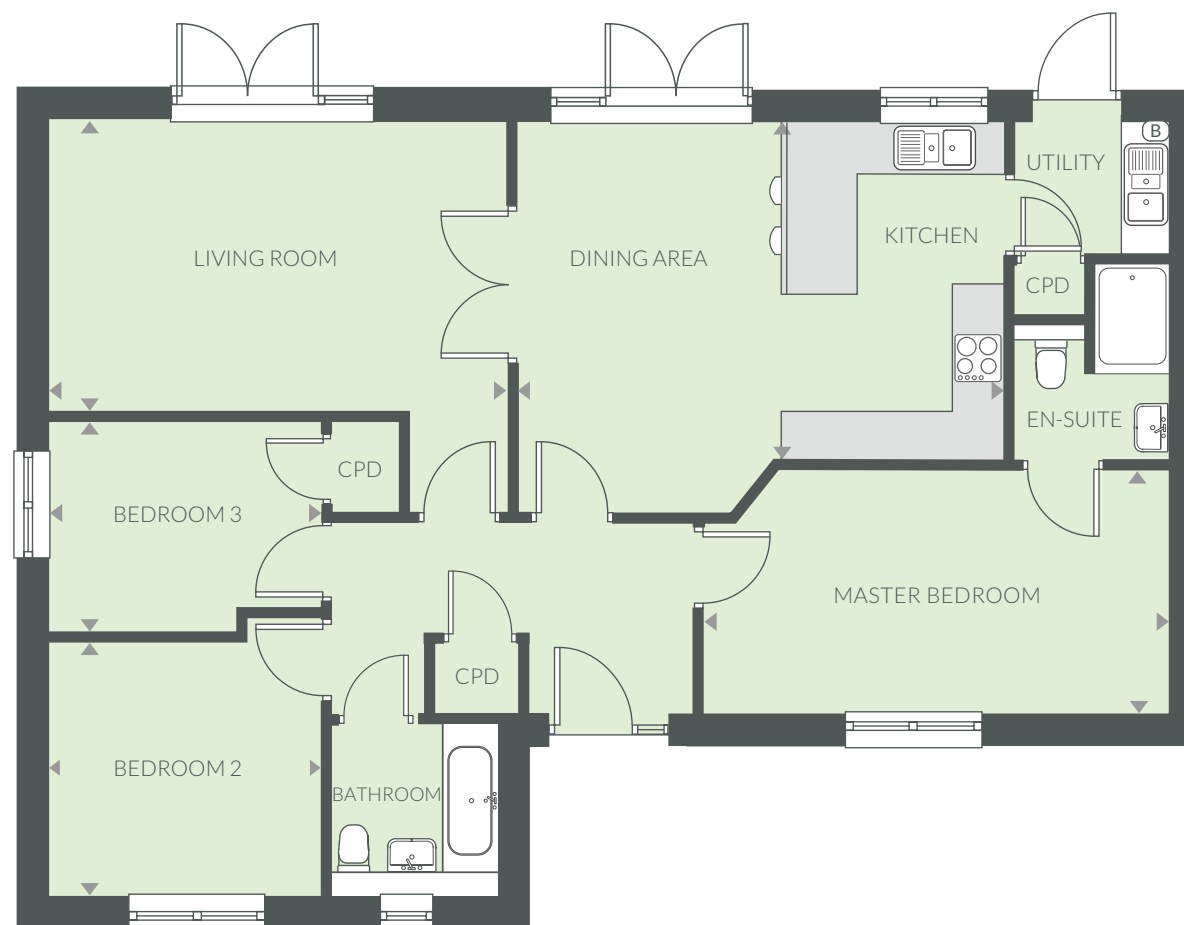


THE PRIMROSE



THE PRIMROSE

A three bedroom bungalow with parking.



GROUND FLOOR

Kitchen/Dining	5.77m x 4.00m	18'11" x 13'2"
Living Room	5.44m x 3.45m	17'10" x 11'4"
Master Bedroom	5.52m x 2.90m	18'2" x 9'6"

Bedroom 2	3.31m x 3.03m	10'10" x 9'11"
Bedroom 3	3.31m x 2.49m	10'10" x 8'2"

KEY: (B) Boiler CPD Cupboard

Computer generated image is not to scale. Finishes and materials may vary from those shown. Landscaping is illustrative only. Different styles of this house type may have a varied layout or larger dimensions. Please note floor plans and dimensions are taken from architectural drawings and are for guidance only, please ask to see plot-specific working drawings. Kitchen layouts are for illustrative purposes only, please ask to see separate kitchen layouts. Measurements are taken from working drawings and cover carpeted floor area only.