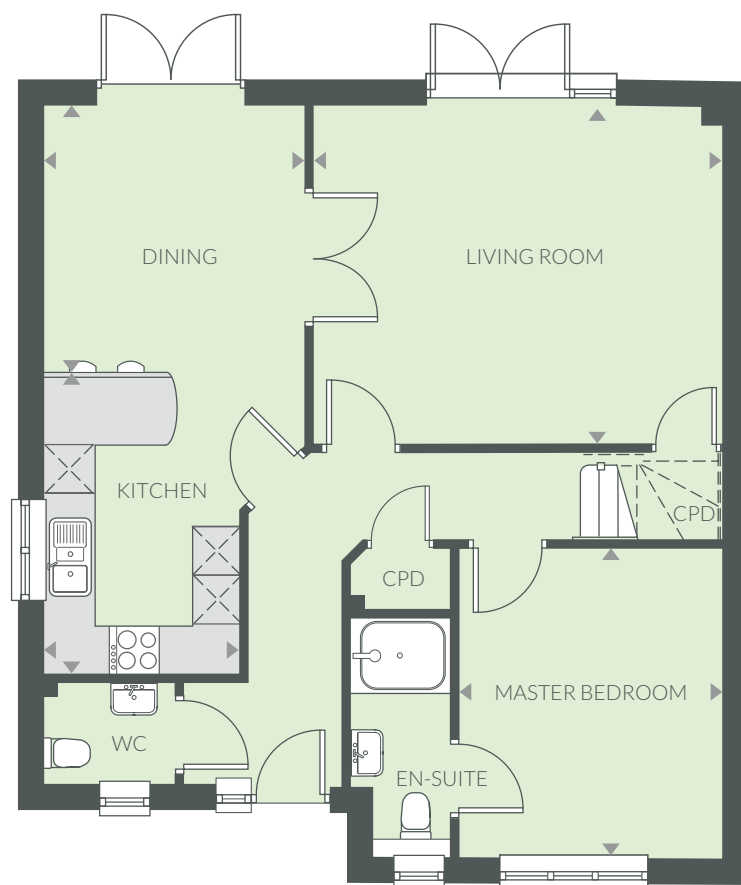


# THE HOLLY



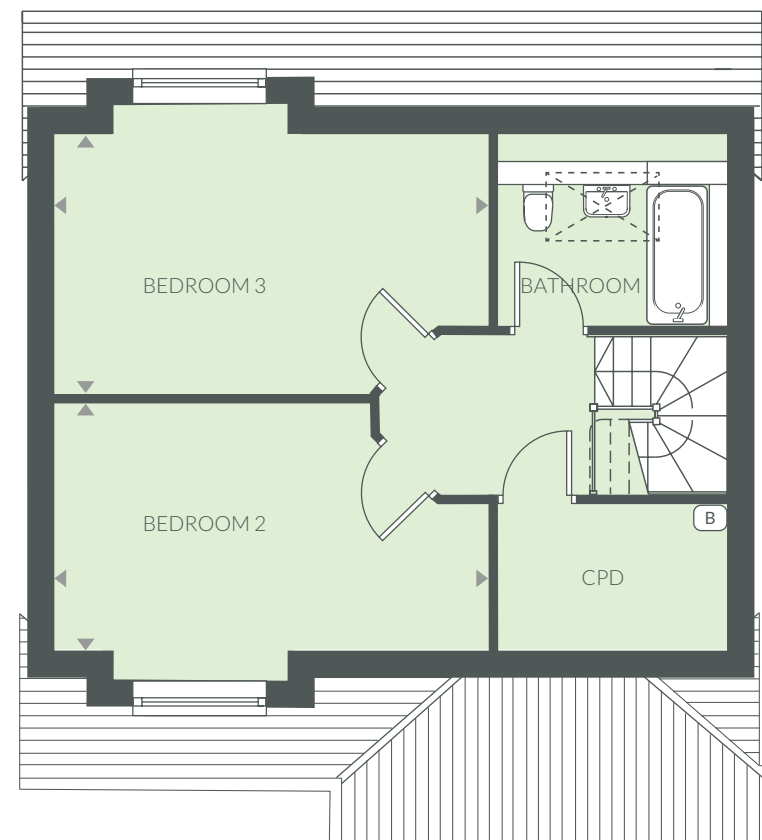
## THE HOLLY

A three bedroom chalet bungalow with a garage and parking.



GROUND FLOOR

Kitchen	3.99m x 2.41m	13'1" x 7'11"
Dining Room	3.24m x 3.09m	10'8" x 10'2"
Living Room	4.96m x 4.14m	16'4" x 13'7"
Master Bedroom	3.75m x 3.31m	12'4" x 10'10"



FIRST FLOOR

Bedroom 2	5.54m x 3.36m	18'2" x 11'
Bedroom 3	5.54m x 3.36m	18'2" x 11'

**KEY:** (B) Boiler CPD Cupboard [Hatched Box] Roof light

Computer generated image is not to scale. Finishes and materials may vary from those shown. Landscaping is illustrative only. Different styles of this house type may have a varied layout or larger dimensions. Please note floor plans and dimensions are taken from architectural drawings and are for guidance only, please ask to see plot-specific working drawings. Kitchen layouts are for illustrative purposes only, please ask to see separate kitchen layouts. Measurements are taken from working drawings and cover carpeted floor area only.