

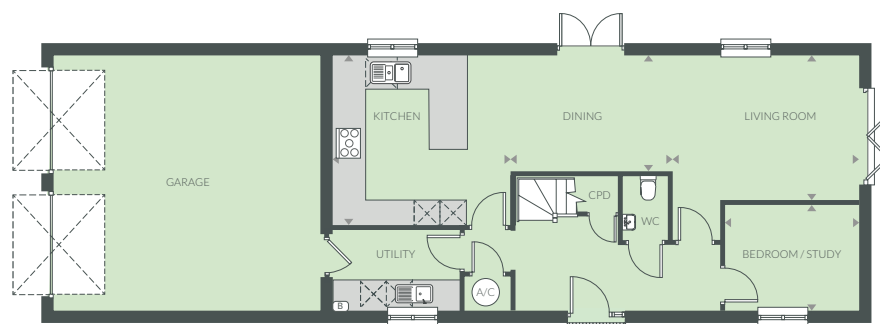
# THE BUTTERCUP



## THE BUTTERCUP

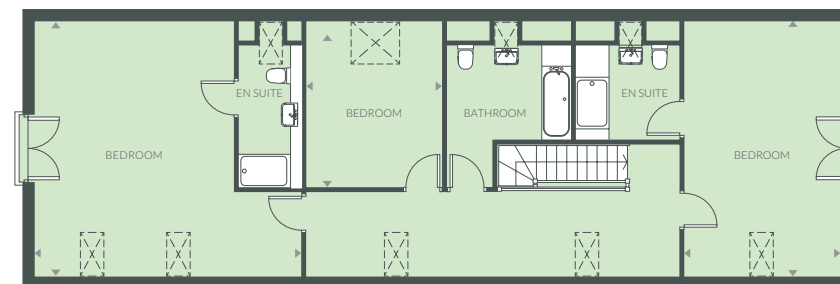
A four bedroom barngalow with a double garage and parking.





## GROUND FLOOR

Kitchen	4.13m x 3.94m	13'7" x 12'11"
Dining	3.85m x 2.66m	12'8" x 8'9"
Living Room	4.30m x 3.36m	14'1" x 11'0"
Bedroom / Study	3.10m x 2.41m	10'2" x 7'11"



## FIRST FLOOR

Bedroom / Ensuite	6.19m x 5.86m	20'4" x 18'4"
Bedroom / Ensuite	5.86m x 3.61m	19'3" x 11'10"
Bedroom	3.58m x 3.23m	11'9" x 10'8"

**KEY:** (B) Boiler CPD Cupboard [Dashed Box] Roof light

Computer generated image is not to scale. Finishes and materials may vary from those shown. Landscaping is illustrative only. Different styles of this house type may have a varied layout or larger dimensions. Please note floor plans and dimensions are taken from architectural drawings and are for guidance only, please ask to see plot-specific working drawings. Kitchen layouts are for illustrative purposes only, please ask to see separate kitchen layouts. Measurements are taken from working drawings and cover carpeted floor area only.