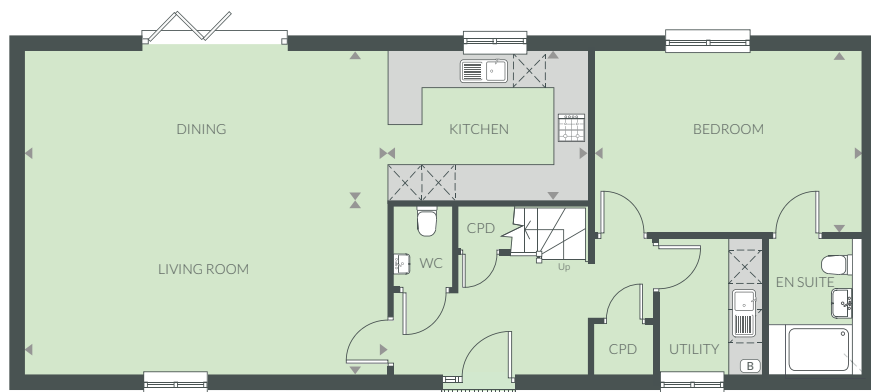


# THE BLOSSOM



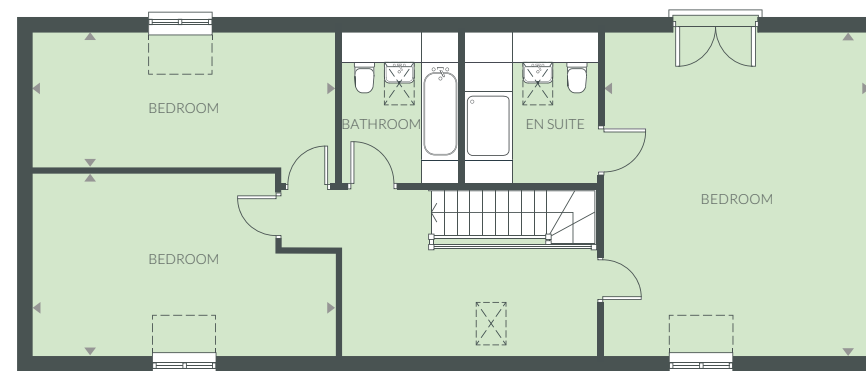
## THE BLOSSOM

A four bedroom bungalow with a double garage and parking.



## GROUND FLOOR

Kitchen	3.70m x 2.67m	12'2" x 8'9"
Dining	6.67m x 2.67m	21'11" x 8'9"
Living Room	6.67m x 3.18m	21'1" x 10'5"
Bedroom / Ensuite	4.88m x 3.33m	16'0" x 10'11"



## FIRST FLOOR

Bedroom / Ensuite	5.86m x 4.92m	19'3" x 16'2"
Bedroom	5.55m x 2.42m	18'3" x 8'0"
Bedroom	5.55m x 3.35m	18'3" x 11'0"

**KEY:** (B) Boiler CPD Cupboard Roof light

Computer generated image is not to scale. Finishes and materials may vary from those shown. Landscaping is illustrative only. Different styles of this house type may have a varied layout or larger dimensions. Please note floor plans and dimensions are taken from architectural drawings and are for guidance only, please ask to see plot-specific working drawings. Kitchen layouts are for illustrative purposes only, please ask to see separate kitchen layouts. Measurements are taken from working drawings and cover carpeted floor area only.