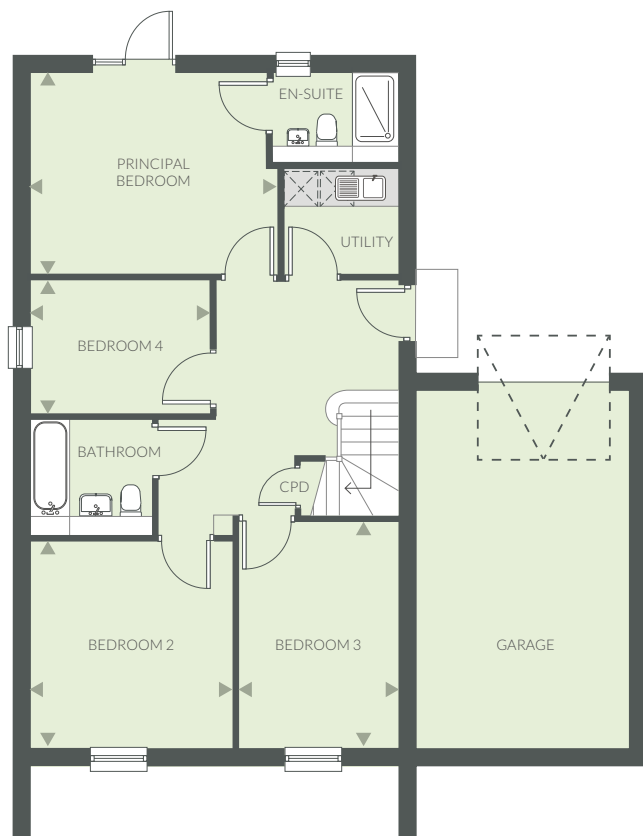


# THE LAVENDER



## THE LAVENDER

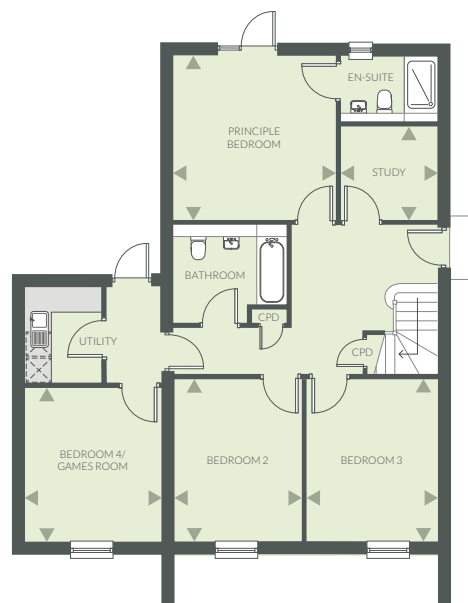
A four bedroom house with garage and parking.



Ground floor layout to plots 221 &amp; 223

## GROUND FLOOR - Plots 221 &amp; 223

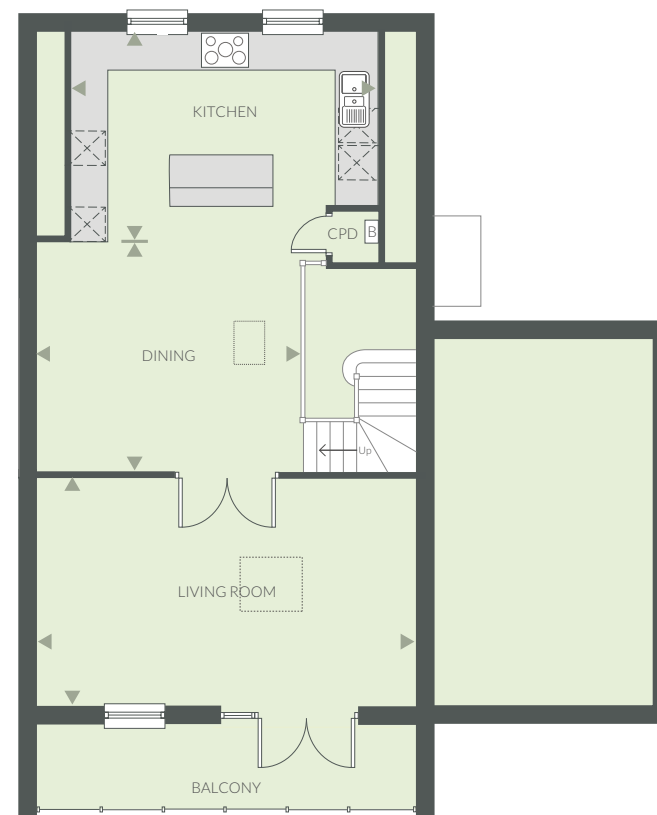
Principle Bedroom	4.3m x 3.5m	14'3" x 11'7"
Bedroom 2	3.6m x 3.5m	12'0" x 11'7"
Bedroom 3	3.9m x 2.7m	12'11" x 9'2"
Bedroom 4	3.1m x 2.2m	10'4" x 7'6"



Ground floor layout to plots 220 &amp; 224

## GROUND FLOOR - Plots 220 &amp; 224

Principle Bedroom	3.9m x 3.9m	13'1" x 13'1"
Bedroom 2	3.9m x 3.1m	12'11" x 10'5"
Bedroom 3	3.9m x 3.1m	12'11" x 10'5"
Bedroom 4/Games Room	3.6m x 3.2m	12'0" x 10'8"
Study	2.3m x 1.5m	7'9" x 5'2"



## FIRST FLOOR

Kitchen	5.2m x 3.6m	17'2" x 12'1"
Dining	4.5m x 4.0m	14'11" x 13'4"
Living Room	6.4m x 3.9m	21'1" x 13'1"

KEY: **B** Boiler **CPD** Cupboard

Computer generated image is not to scale. Finishes and materials may vary from those shown. Landscaping is illustrative only. Different styles of this house type may have a varied layout or larger dimensions. Please note floor plans and dimensions are taken from architectural drawings and are for guidance only, please ask to see plot-specific working drawings. Kitchen layouts are for illustrative purposes only, please ask to see separate kitchen layouts. Measurements are taken from working drawings and cover carpeted floor area only.