

THE MAPLE



HOMES

5, 6, 7, 8, 9, 10,
11, 12, 18, 19, 20
& 21

THE MAPLE

Three bedroom semi-detached home with two parking spaces.

THE MAPLE

HOMES

8, 11, 12, 18, 19, 20 & 21 | 5, 6, 7, 9 & 10 (opposite)

GROUND FLOOR

Living/Dining Area 4.95 x 4.56m 16'3" x 15'0"

Kitchen 3.95 x 2.81m 13'0" x 9'3"

FIRST FLOOR

Master Bedroom 3.90 x 2.63m 12'9" x 8'8"

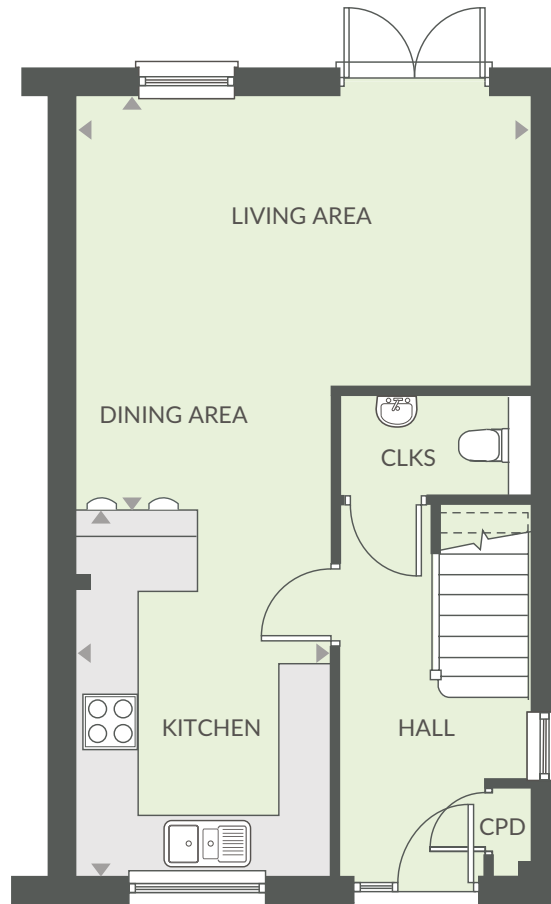
Bedroom 2 3.00 x 2.63m 9'10" x 8'8"

Bedroom 3 2.60 x 2.23m 8'6" x 7'4"

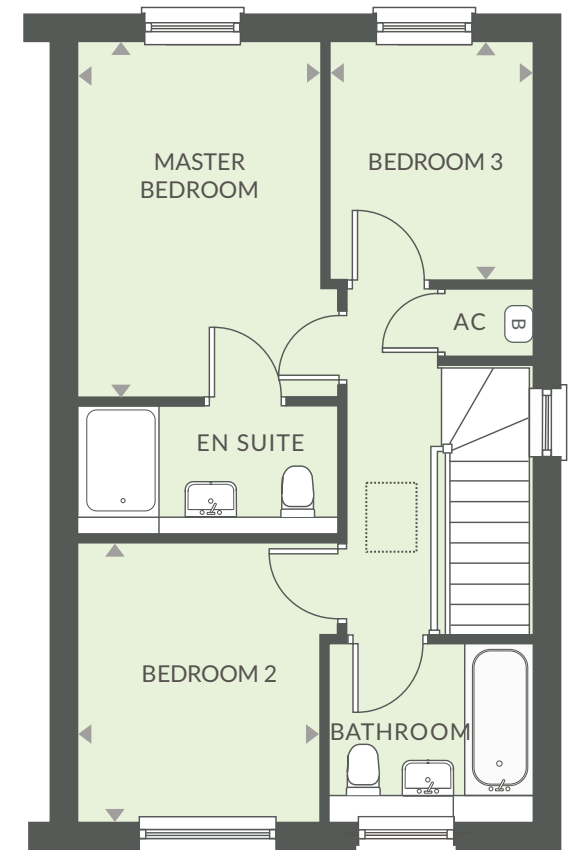
TOTAL FLOOR AREA

84 sq m 907 sq ft

SITE PLAN



GROUND FLOOR



FIRST FLOOR

KEY: (B) Boiler CPD Cupboard [Loft access hatch symbol] Loft access hatch AC Airing cupboard

Computer generated image is not to scale. Finishes and materials may vary from those shown. Landscaping is illustrative only.

Please note floor plans and dimensions are taken from architectural drawings and are for guidance only.

Kitchen layouts are for illustrative purposes only, please ask to see separate kitchen layouts.